

Data Migration Utility from dB35 to Insight Databases

Introduction

Many Casella CEL customers will have already been using the original download software, dB35, for their CEL-350 dBadge noise dosimeters. A considerable number of measurements may have been made and stored in the dB35 database. **Casella Insight** is the new download software package for the dBadge dosimeters and features many useful enhancements over the earlier version of dB35 so it is likely that customers will want to move their recordings over from the dB35 structure to the more modern **Insight** software package.

Casella Measurement has developed a “Data Migration Utility” (DMU) program that enables customers with **Insight** software to import their dB35 database containing earlier recordings. This utility program works when the original database in dB35 and the new database in Insight software are both on the same computer hard drive. It will not transfer results between different computers.

There is a simple Export routine in dB35 that allows the results from one part of the tree structure to be sent to Insight but in a large database that has many branches this can become unwieldy. The DMU program will export all the results from a larger database and move them across to a newly installed **Insight** database much more conveniently. For the DMU program to work as designed the original dB35 database and the new **Insight** installation must be on the same computer.

For added convenience, if the migration utility program described here is run when **Insight** is first loaded it will copy across all the run data and the structure from the old dB35 database at the same time. This will be very convenient when larger databases have been built up and developed in dB35. If there are only a few “test runs” in the new **Insight** database then the migration utility will skip the structure and only copy the records so the user will have to restore all the structure manually. In this case, the easiest thing to do will be to make a note of the existing small structure (perhaps by doing a screen print of the locations and persons added so far) exporting the few runs temporarily and then deleting all the new structure before running the DMU.

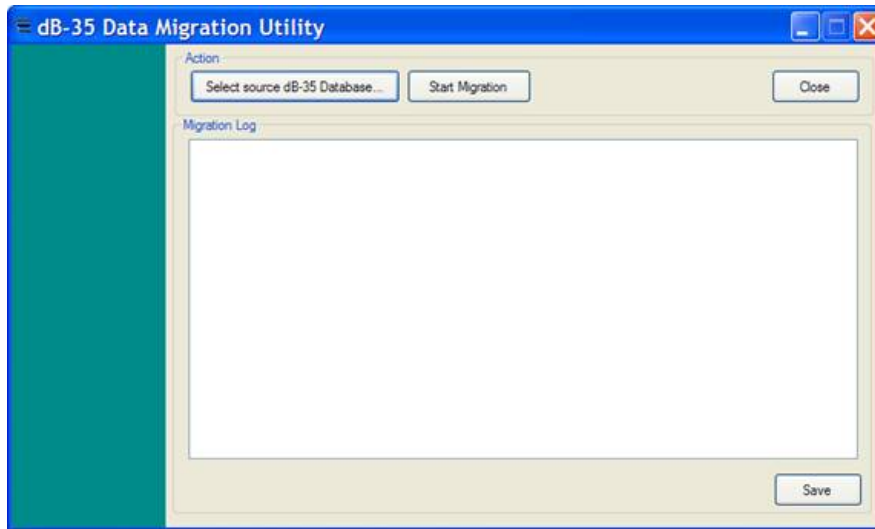
Then run the utility with a blank structure in **Insight** and the whole of the old database will be copied across to the **Insight** software as described below.

When running this DMU program please make sure that the dB35 Software and the **Casella Insight** Software programs are closed.

April 2010

Step by step instructions for using DMU

1. The file for the DMU program is contained in the zipped file called “**dB35 Data Migration Tool 20090619.zip**”. Copy this to your Desktop then extract the files to a folder on your Desktop (as the program will not work in any other location).
2. Double click the **dB35 Data Migration Tool.exe** and the following screen will appear.

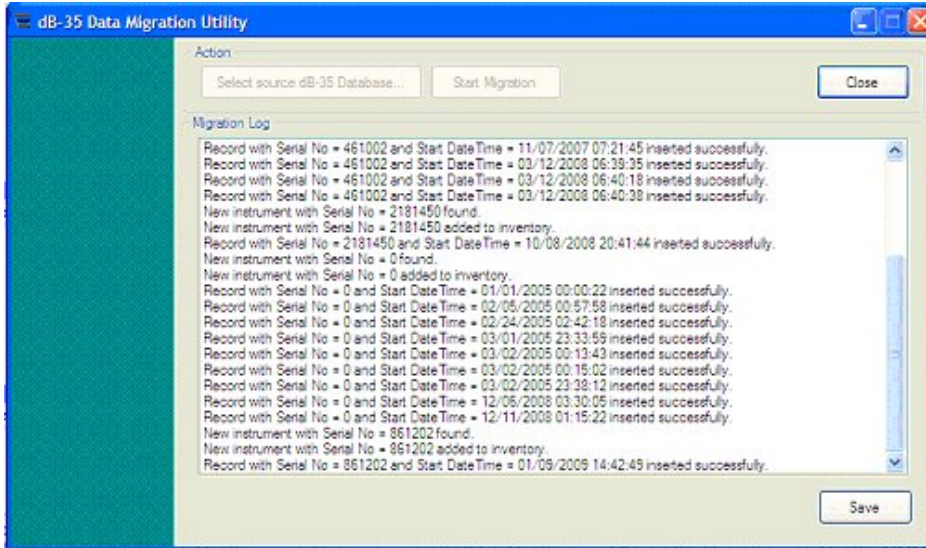


3. Click on the button labelled **Select Source dB35 Database...** to prompt the “Connect To” Server dialog box to appear.
4. Leave the information in each of the top 2 fields as **(local)** and **Windows Authentication** then click the ”Connect” link just below.

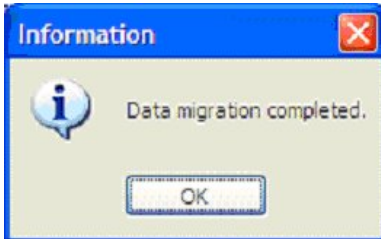


5. Once the Database drop down list is made available, select **dB35default** from the list and then click OK.
6. The main migration screen will then be shown ready for you to select **Start Migration**.

7. Click on the **Start Migration** button and the software will start to move the run results from the older dB35 database to the new **Insight** database.



8. The following message will be displayed when the migration routine has finished.



9. Click on the Save button to save a copy of the Migration Log as a text format file on your hard drive if you want to review the steps in the operation.