

USB Driver Installation Under Windows XP

Plug in the USB type A receptacle of the cable to the USB connector of your computer.
Place the enclosed CD into the CD ROM drive to load the necessary driver software.
Click “next” at the Found New Hardware Wizard screen.

See Figure 1



Figure 1

Select the default location and click “next” to continue.

See Figure 2

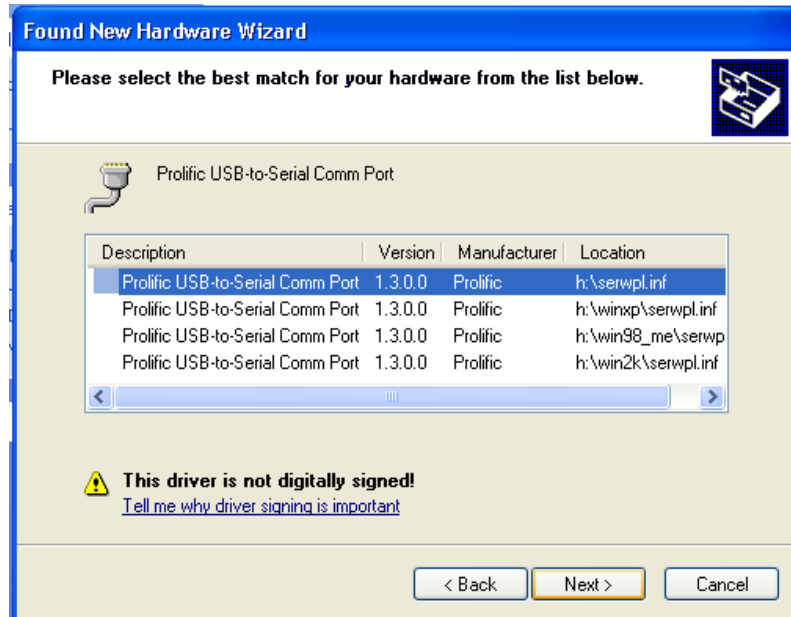


Figure 2

Click “**Continue anyway**” to proceed with the installation.

See Figure 3



Figure 3

The Wizard will continue installing the software, click “**Finish**” to close the Wizard.

See Figure 4.

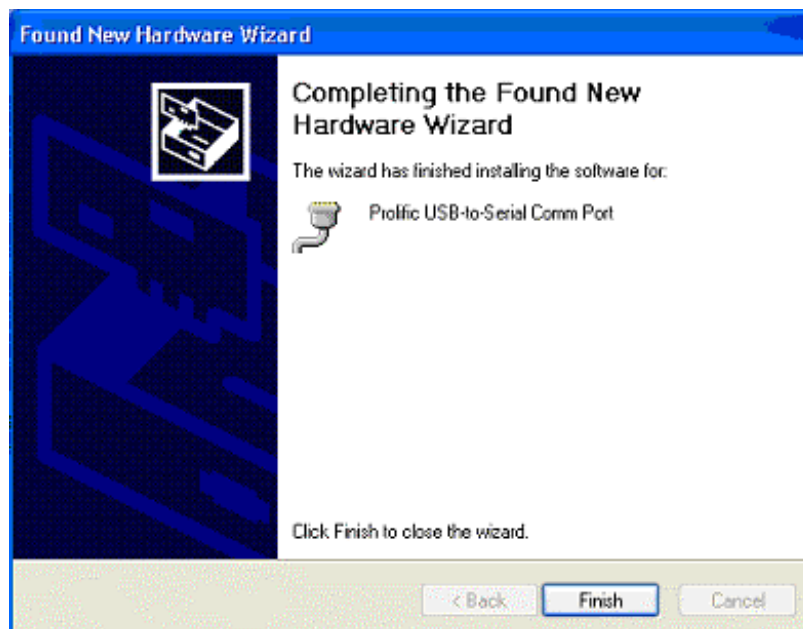


Figure 4

Double click “My Computer” → ”System Properties”→ ”Device Manager” → Ports (Com & LPT1) to make sure the device you have just installed is correctly displayed. See Figure 5

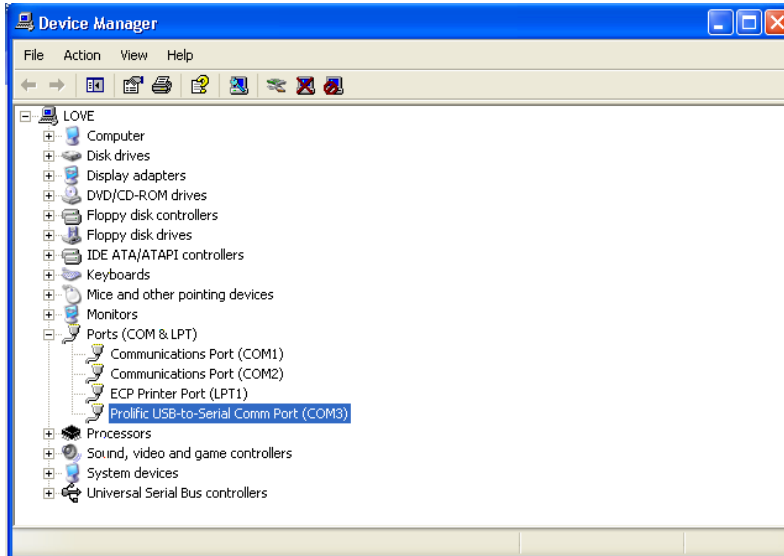


Figure 5

Make a note of the port that Windows has installed the USB adapter to and enter this into the Comm. Port selection in your CEL or Casella software program before attempting to communicate with your instrument; in this case it has been installed as Com3.