

CASELLA insight - DATA MANAGEMENT SOFTWARE

Introduction

Making measurements is only half the battle. Raw data is not the end result for environmental or industrial hygiene measurements. What is needed is a comprehensive approach to the whole process to gain useful insight into the data to turn it into useful information. A software program that combines People, Places, Processes and Products into a unified package will be the most benefit to users. Casella **insight** is that software program.



Casella **insight**
 Database Management Software

Key benefits

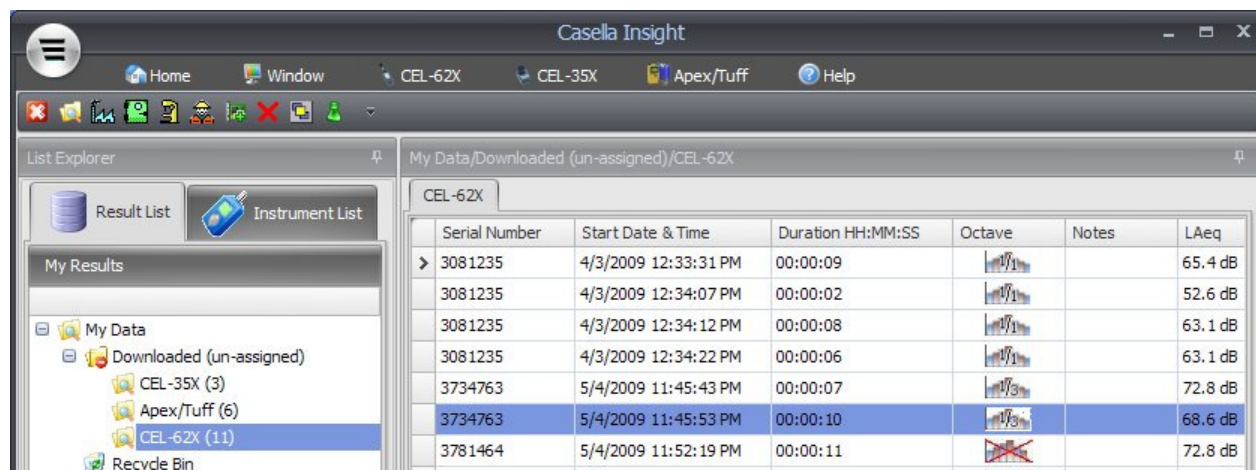
- All the data from your Casella and CEL instruments in a single database file
- Make comprehensive reports from multiple instruments
- Simplify the learning process
- Collaborate with colleagues in other offices
- Add instrument specific plug-ins as needed
- Manage all your noise, dust and other IH data from one place

Overview

Casella **insight** data management software provides busy health and safety professionals with a more advanced solution for downloading, managing and reporting exposure data from a variety of occupational hazards. Rather than using several and often different software packages to download from different instruments, Casella **insight** allows data to be transferred and stored into one versatile package. That means only one single application has to be learned.

Data is stored in a central database which can be setup by the user in terms of “Persons”, “Places”, “Processes” together with “Sites” and “Locations”. Downloaded runs from the instruments are then allocated to the appropriate link in the data base structure and managed for inspection and reporting. Data can be viewed in tabular or graphical formats and analyzed as required. Uniquely, reports can be generated that combine multiple hazards that have been monitored by separate meters.

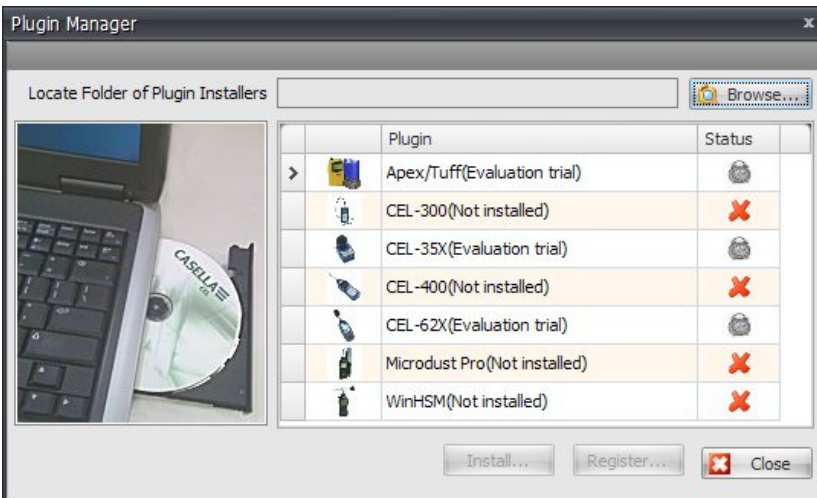
Reports may be displayed based on an individual Person, a particular Place or a Process of interest. Extensive options are provided to choose the most appropriate format for the report in terms of file types and data can be exported into other popular desktop programs for further manipulation by the user. The Casella **insight** management software also allows the user to add new Plug-in modules as other Casella or CEL instruments are added to the user’s list of equipment.



Example screen shot from software

Instrument Configuration

When an instrument is connected to Casella **insight** it will automatically download any stored run data. Instruments can also be controlled and configured. When a new instrument is added to the user's fleet a new Plug-in will be needed to communicate with **insight**. Data can be imported from other copies of **insight** so that results may be shared between users in organizations. Run data from existing Casella or CEL software packages can be imported also to update their presentation with **insight**.



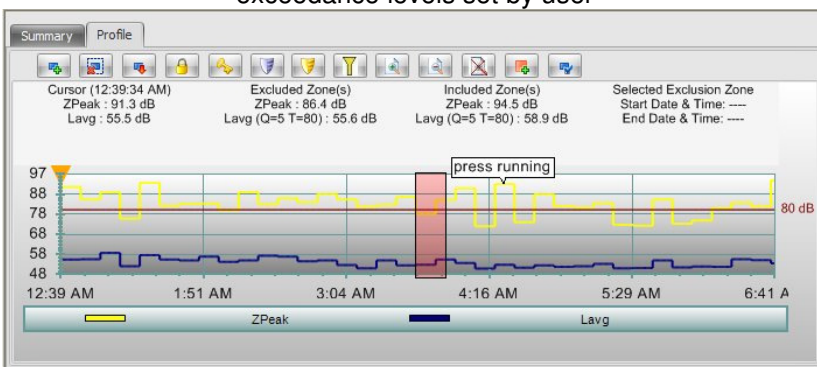
adding new instrument Plug-ins

Analysis of results

Exposure levels can be color coded by user selectable action levels to see the problems needing to be corrected. A simple "traffic light" system highlights those results that exceed the trigger criteria. Where instruments store time history information such as logging noise dosimeters or sound level meters the traces can be viewed and analyzed. Multiple exclusion zones can be setup that will remove unwanted parts of the recording to recalculate the overall values without lunch breaks, for example. Labels can be applied to the time history charts to draw attention to significant events during the measurement and these are permanently stored with the data. Results are linked to people and locations after they are created in the database.

Serial Number	Start Date & Time	Duration HH:MM:SS	Octave	Notes	L _{Aeq}	L _{Cpeak} with Time
3081235	4/3/2009 12:33:31 PM	00:00:09	1/3		65.4 dB	101.8 dB (4/3/2009 12:33:31 PM)
3081235	4/3/2009 12:34:07 PM	00:00:02	1/3		52.6 dB	76.6 dB (4/3/2009 12:34:07 PM)
3081235	4/3/2009 12:34:12 PM	00:00:05	1/3		53.1 dB	100.0 dB (4/3/2009 12:34:12 PM)
3081235	4/3/2009 12:34:22 PM	00:00:06	1/3		53.1 dB	100.1 dB (4/3/2009 12:34:22 PM)
3734763	5/4/2009 11:45:43 PM	00:00:07	1/3		72.8 dB	108.7 dB (5/4/2009 11:45:43 PM)
3734763	5/4/2009 11:45:53 PM	00:00:10	1/3		68.6 dB	107.3 dB (5/4/2009 11:45:53 PM)
3781464	5/4/2009 11:52:19 PM	00:00:11	1/3		72.8 dB	108.7 dB (5/4/2009 11:52:19 PM)
3781464	5/4/2009 11:52:32 PM	00:00:59	1/3		67.3 dB	112.3 dB (5/4/2009 11:52:32 PM)
3781464	5/4/2009 11:53:42 PM	00:00:12	1/3		54.5 dB	82.6 dB (5/4/2009 11:53:42 PM)
3872450	5/5/2009 12:01:33 AM	00:00:11	1/3		74.6 dB	114.8 dB (5/5/2009 12:01:33 AM)
3872450	5/5/2009 12:01:48 AM	00:00:12	1/3		77.2 dB	117.9 dB (5/5/2009 12:01:48 AM)

exceedance levels set by user



time history charts with exclusion zones

Ordering information

Casella **insight** A

Casella **insight** B
 Casella **insight** C
 Casella **insight** D

Casella **insight** core DMS program supplied on a CDROM (a license charge is payable for extended use of the software after the fully functioning initial demonstration and evaluation period has ended)
 Casella **insight** Plug-in for **CEL-600** sound level meter range
 Casella **insight** Plug-in for **Apex/Tuff** sampling pump range
 Casella **insight** Plug-in for **CEL-350** sound level meter range